

HONEYWELL  
PART NUMBER  
111SM23-T  
PRODUCT CODE  
TYJ2360

REV	DOCUMENT	CHANGED BY	CHECK
7	0038225	PRS 04APR08	BLR

B

B

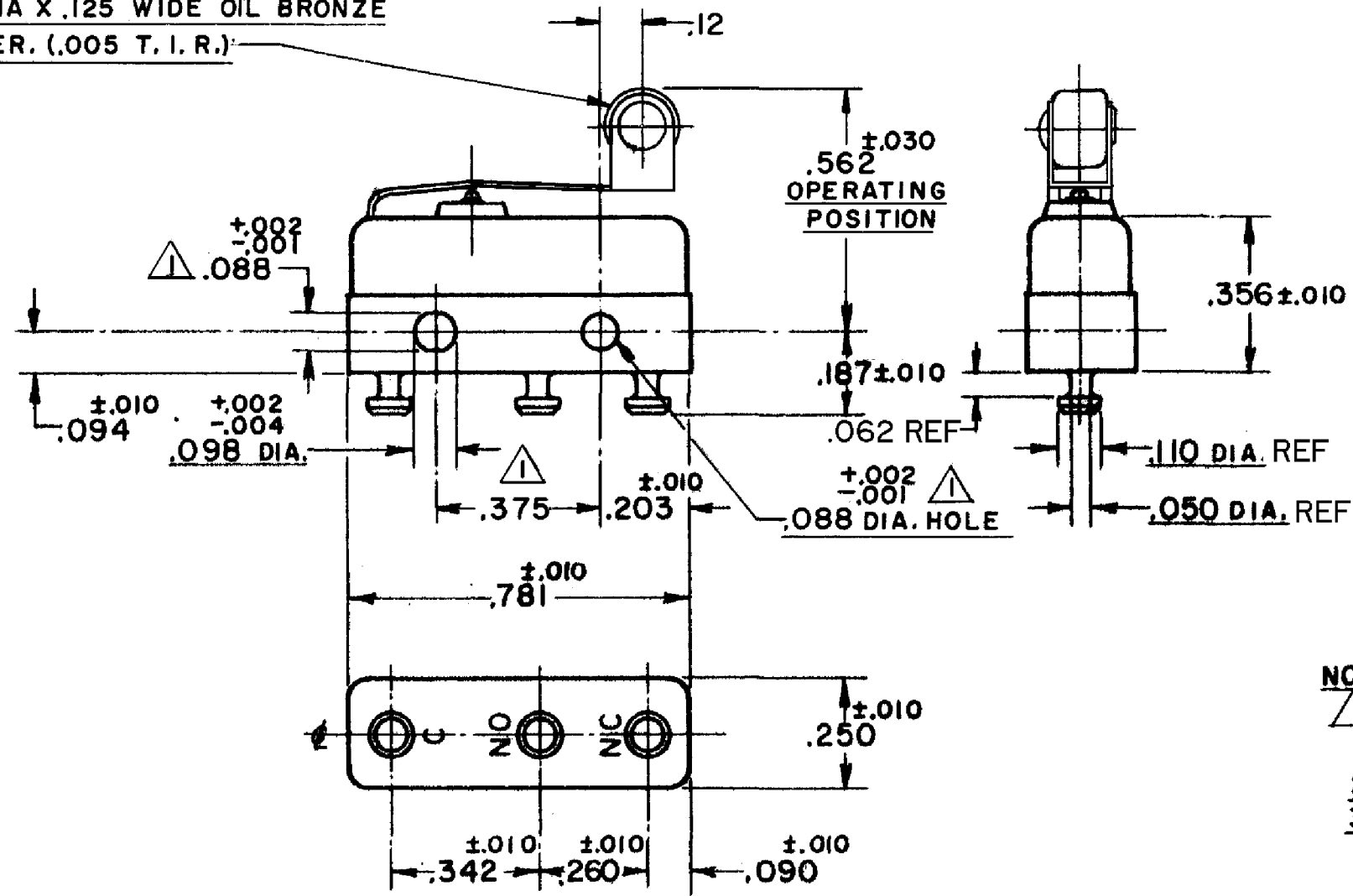
A

A

A

A

.187 DIA X .125 WIDE OIL BRONZE  
ROLLER. (.005 T. I. R.)



**NOTE -**

- 1- MOUNTING HOLES WILL ACCEPT PINS OR SCREWS OF .087 MAX. DIA. ON .375 $\pm$ .002 CENTERS.
- 2- TERMINALS ARE PLATED FOR SOLDERING.
- 3- MATING CONTACT SURFACES ARE 24K SOLID GOLD OVERLAY

RELEASE NO. SR - 8330

REPLACES -

CHARACTERISTICS	
OPERATING FORCE	--- 7 OZ MAX
RELEASE FORCE	--- 2 OZ MIN
PRETRAVEL	--- .219 MAX
DIFFERENTIAL TRAVEL	--- .025 MAX
OVERTRAVEL	--- .030 MIN

ELECTRICAL DATA		
CONTACT ARRANGEMENT SPDT		
30 VOLTS DC RATING		
	SEA LEVEL	50,000 FT
INDUCTIVE	1/2 AMP	1/2 AMP
RESISTIVE	1 AMP	1 AMP
MAXIMUM INRUSH 2 AMP		
APPROVALS	KEMA, CE	1A, 250V ~ T85 1E4
	UL, CSA	1A, 125 VAC ~

DESIGN UNITS: INCH	
TOLERANCES UNLESS NOTED:	
NO PLACE	X $\pm$
ONE PLACE	.X $\pm$
TWO PLACE	.XX $\pm$
THREE PLACE	.XXX $\pm$
FOUR PLACE	.XXXX $\pm$
ANGLES	$\pm$
THIRD ANGLE PROJECTION	

DRAWN	VK	26 OCT 07
CHECK	RJ	26 OCT 07
THIS DRAWING COVERS A PROPRIETARY ITEM AND IS THE PROPERTY OF HONEYWELL. THIS DRAWING IS NOT TO BE COPIED OR USED WITHOUT THE PERMISSION OF HONEYWELL.		
INTERPRET PER ANSI Y14.5M-1982 OTHER HONEYWELL ENGINEERING STANDARDS MAY APPLY		
RASTER		

Honeywell			
TITLE			
SWITCH - BASIC			
SIZE	TYPE	DRAWING NAME	REV
B	I	111SM23-T	7
SCALE	-	WEIGHT	.008 LB MAX
SHEET		1 OF 1	